

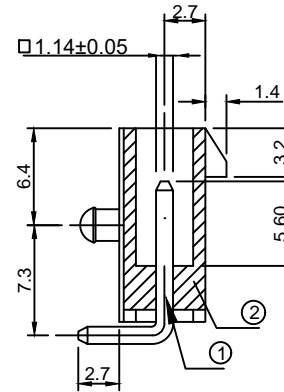
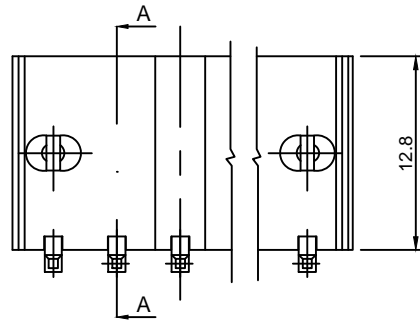
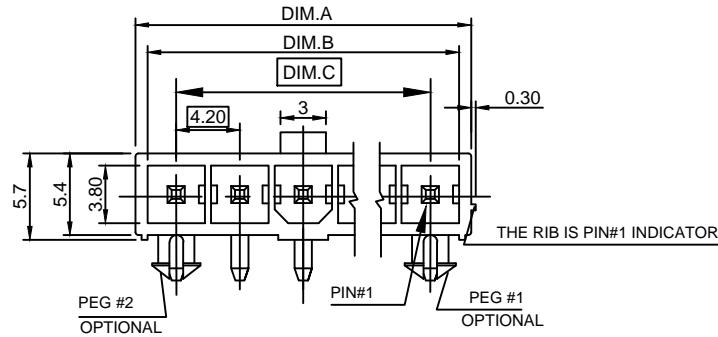
P350 SERIES

1. DIMENSIONING SHALL BE INTERPRETED PER ANSI Y14.5M-1994
2. CONTACT RETENTION FORCE : 1.36kgf MIN. PER CONTACT
3. OPERATION TEMPERATURE : -40°C TO +105°C

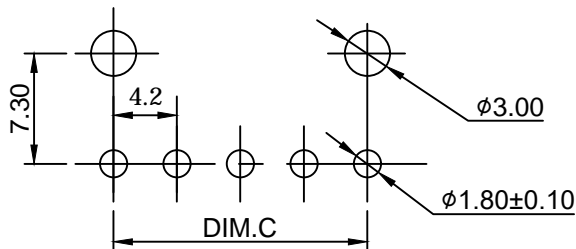
ORDERING INFORMATION

P350 - □□ - □ - □□

No. of Pos. _____ **Code** _____
Contact Area Plating _____
 0 : 100μ" Min. Tin/Lead Plating Over All
 2 : Gold Flash Over All
 8 : 15μ" Min. Gold



SEC: A-A



RECOMMENDED PCB LAYOUT

P350 - 06 - □ - □□	6	26.4	24.8	21.00
P350 - 05 - □ - □□	5	22.2	20.6	16.80
P350 - 04 - □ - □□	4	18.0	16.4	12.60
P350 - 03 - □ - □□	3	13.8	12.2	8.40
Part No.	No. of Pos.	Dim. A	Dim. B	Dim. C

ITEM	Q'TY	DESCRIPTION
②	1	Insulator : PA66 UL94V-0 Color : Ivory
①	BASE ON POS.	Contact : Brass 50μ" Min. Nickel Under Plated

COMPONENT PARTS LIST

Title : Customer Drawing		Type : Power Connector	
Part No. : P350 Series			
Description : P350 Mini Fit. Power Connector Single Row R/A			
Tolerances Unless Otherwise Specified :			
X. ± 0.50	.X ± 0.38	.XX ± 0.25	
X. ° ±	.X ° ±	.XX ° ±	
DWG No. : 010 - 0002 - 431	Date : 01 - Aug. - 2004		Dim.
APPD. : James C.	CHK. : Connie Z.		Scale
DRW. : Bryant C.		Sheet	Rev.
		mm	N/A
		1 of 1	A