

P500 SERIES

- OPERATION TEMPERATURE : -40°C ~ +105°C
- CONTACT RETENTION FORCE : 0.91kgf MIN.

ORDERING INFORMATION

P500 - □ - □ - □ - □

No. of Single Row Pos. _____

None : Standard Product

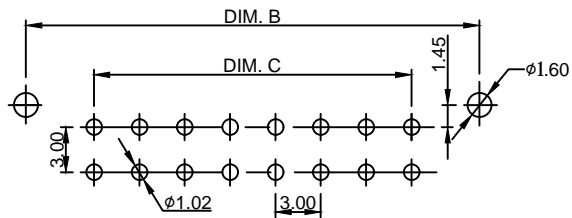
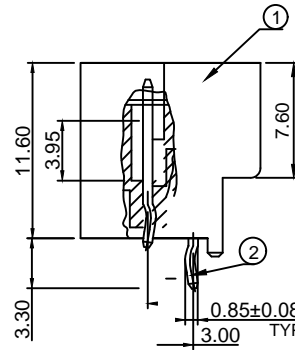
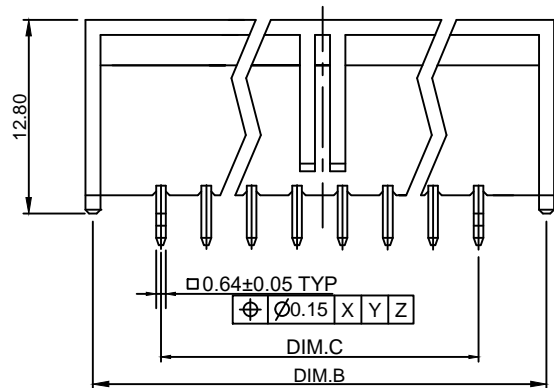
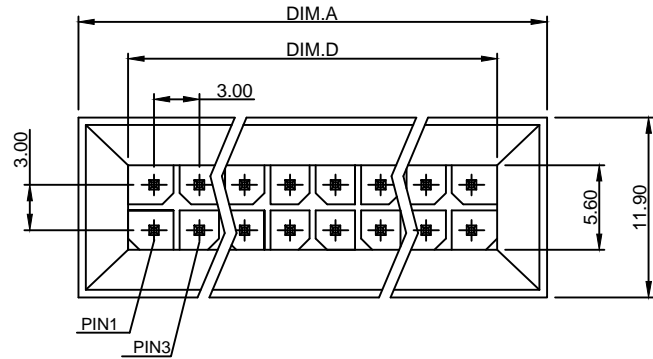
Contact Area Plating _____

K : All The Pins Should Be Kinked If The Pin No. Is 2/4 or 3/6.

0 : 200μ" Min. Tin/Lead Plating Over All

The First & The Last Pair Of Pins Should Be Kinked If the Pins No. Beyond 3/6

2 : Gold Flash Over All



RECOMMENDED PCB LAYOUT

P500 - 06 - □ - □	6/12	25.0	24.00	15.00	18.40
P500 - 04 - □ - □	4/8	19.0	18.00	9.00	12.40
P500 - 03 - □ - □	3/6	16.0	15.00	6.00	9.40
P500 - 02 - □ - □	2/4	13.0	12.00	3.00	6.40
Part No.	No. of Pos.	Dim. A	Dim. B	Dim. C	Dim. D

ITEM	Q'TY	DESCRIPTION
①	1	Insulator : PA6T UL94V-0 Molded Color : Black
②	BASE ON POS.	Contact : Brass 50μ" Min. Nickel Under Plating
COMPONENT PARTS LIST		

Title : Customer Drawing		Type : Power Connector		CTL 彩電企業股份有限公司 CHARTRON INCORPORATION			
Part No. : P500 Series				Tolerances Unless Otherwise Specified :			
Description :				X. ± 0.50 .X ± 0.38 .XX ± 0.25			
P500 Power Connector				X.° ± .X° ± .XX° ±			
Pitch 3.00 mm, Row to Row 3.00 mm							
DWG No. : 010 - 0003 - 446		Date : 01 - Aug. - 2004		Dim.		Scale	
APPD. : James C.		CHK. : Connie Z.		mm		N/A	
DRW. : Bryant C.				Sheet		Rev.	
				1 of 1		A	