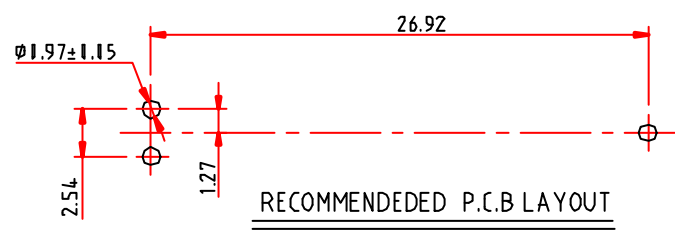
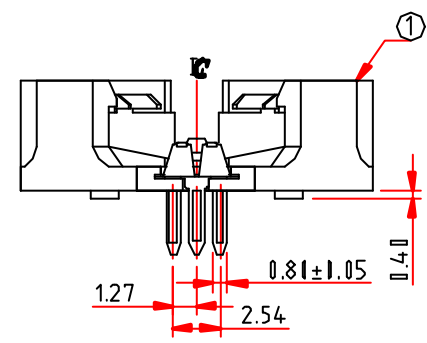
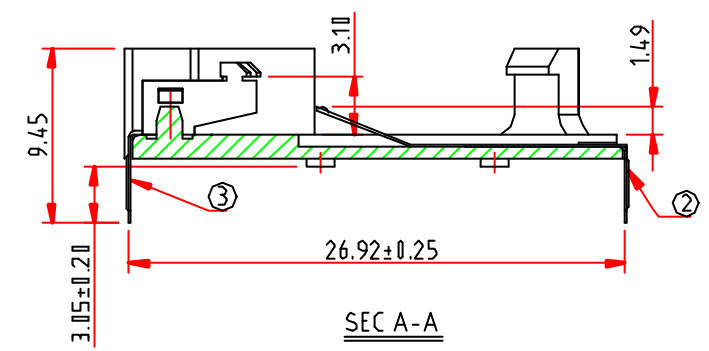
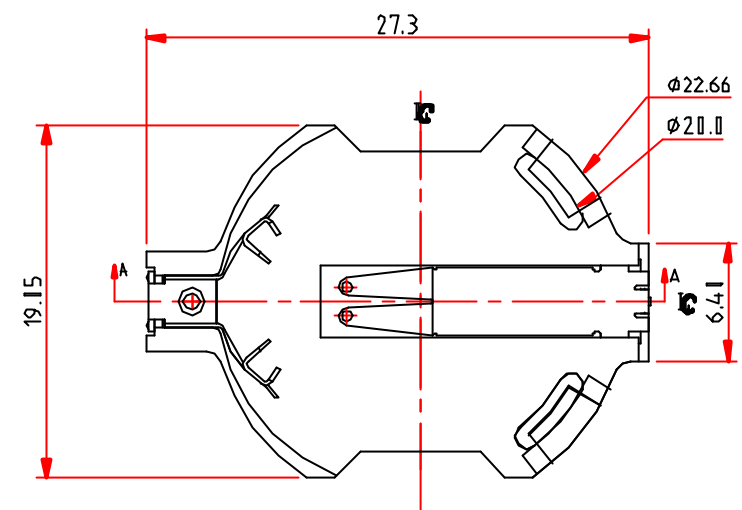


REV	ECN. NO.	APPD.
A	DC14057	T.K MENG 8/7/2014

NOTE: UNLESS OTHERWISE SPECIFIED  
 1. CONNECTOR ACCEPTS BATTERY #CR2032.  
 2. PRODUCT NO. MATRIX:

B100-N-N

CONTACT AREA PLATING  
 0=100µ"MIN. TIN/LEAD PLATING OVER ALL  
 2=2µ"MIN. GOLD FLASH PLATING OVER ALL  
 MOUNTING END TYPE  
 1: R/H TYPE  
 2: SMT TYPE

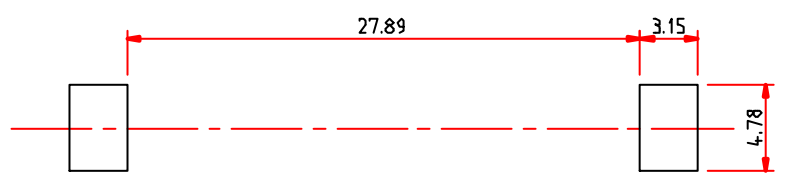
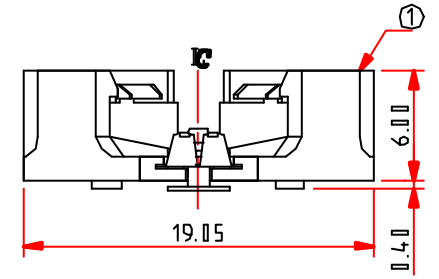
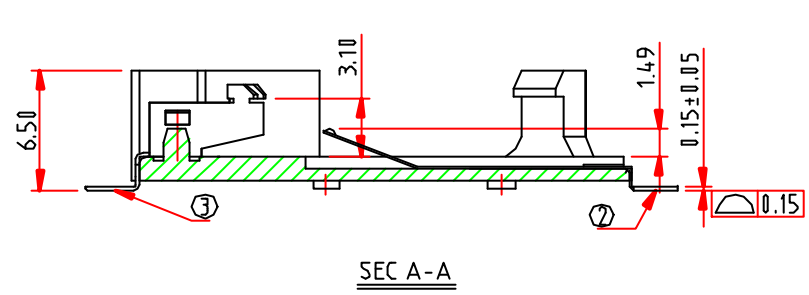
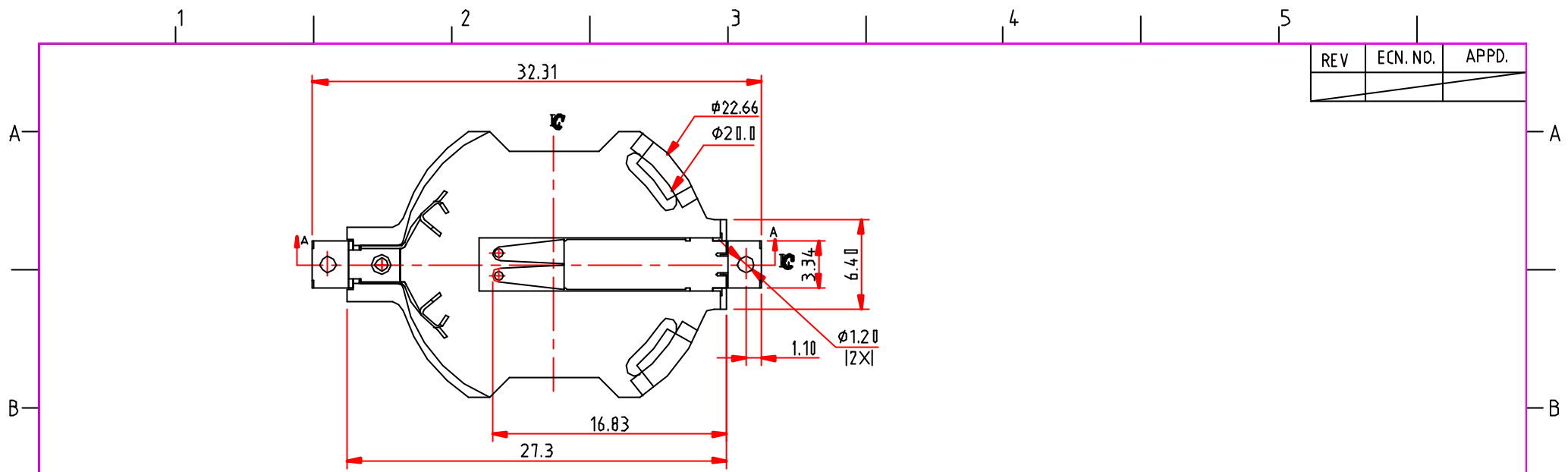


B100-1-N	RIGHT ANGLE, T/H TYPE
PROD. NO.	REMARK

X.±	.X± 1.25	.XX± 1.20	NAME<-INTENDED USE> BATTERY HOLDER CONN.	<b>CTL CHATRON INCORPORATION</b>
X°±2°	.X°±	.XX°±	PART NO.<-INTENDED USE> B100 SERIES	
UNITS: mm	DATE: 8/1/2014		APPD: T. K MENG	TITLE: CUSTOMER DRAWING
MAT'L			CHKD: GUDCHAD YAN	DWG NO. 111-0002-630
			DR: TANG HAI QING	SCALE SHEET REV N/A 1/2 A

ITEM	Q'TY	DESCRIPTION
③	1	ANODE CONTACT, PHOSPHOR BRONZE, T=0.20mm
②	1	CATHODE CONTACT, PHOSPHOR BRONZE, T=0.15mm
①	1	HOUSING: PA6T, GLASS FILLED, UL94V-0, COLOR BLACK
COMPONENT PARTS LIST		

REV	ECN. NO.	APPD.



B100-2-N	SMT TYPE
PROD. NO.	REMARK

ITEM	Q'TY	DESCRIPTION
③	1	ANODE CONTACT, PHOSPHOR BRONZE T=0.20mm
②	1	CATHODE CONTACT, PHOSPHOR BRONZE, T=0.15mm
①	1	HOUSING: PA6T+30% GLASS FIBER, UL94V-0, COLOR BLACK
COMPONENT PARTS LIST		

X.±	.X± 0.25	.XX± 0.20	NAME<INTENDED USE> BATTERY HOLD CONN.	<b>CTL CHATRON INCORPORATION</b>
X*.± 2*	.X*±	.XX*±		
UNITS: mm	DATE: 8/1/2014		PART NO.<INTENDED USE> B100 SERIES	TITLE: CUSTOMER DRAWING
MAT'L			APPD: T. K MENG	DWG NO. 010-0012-630
			CHKD: GUOCHAO YAN	SCALE SHEET REV N/A 2/2 A
			DR: TANG HAI QING	